



For further information contact:

Tri-Cities Cancer Center
7350 W. Deschutes Ave., Kennewick, WA 99336
Diane Turney, Public Relations
publicrelations@tccancer.org
(509) 737-3440

September 14, 2011

MEDIA RELEASE

FOR IMMEDIATE RELEASE:

**SOME SEE PAINT. OTHERS SEE HOPE.
TRAVELING ART EXHIBIT OPEN TO PUBLIC**

Kennewick, WA – A selection of artwork from the 2010 *Lilly Oncology On Canvas* Art Competition will be on display at the Tri-Cities Cancer Center. From September 16 - 23, 2011, the exhibit is open to the general public from 9:00a.m. – 4:00p.m.

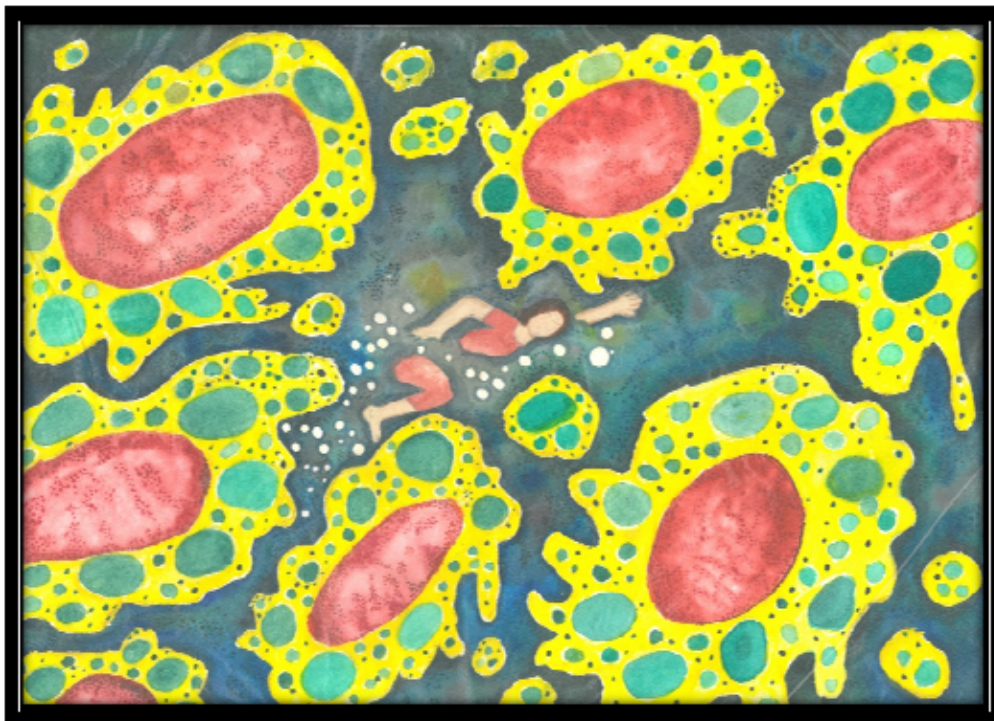


In 2004, Lilly Oncology created *Oncology On CanvasSM: Expressions of a Cancer Journey*, an art competition and exhibition that honors the journeys people face when confronted with a cancer diagnosis. The biennial competition invites individuals diagnosed with any type of

cancer – as well as their families, friends, caregivers, and healthcare providers – to express, through art and narrative, the life-affirming changes that give their cancer journeys meanings.

During the past six years, more than 3,600 inspirational stories have been told in pictures and words. Through the end of 2012, 25 pieces chosen from the 600 entries in the 2010 competition will tour cancer centers, hospitals, and patient advocacy events throughout the United States and Puerto Rico. The display will be open to the public from 9:00 a.m. – 4:00 p.m. September 16 – 23rd at the Tri-Cities Cancer Center.

A local artist from Kennewick won Best Watercolor by a Healthcare Professional. Winners' prizes consist of donations made in their name to the cancer-related charities of their choice. Ms. Stetzel chose the Tri-Cities Cancer Center as the recipient of her winning donation.



Swimming Upstream

For more information on the competition, visit www.LillyOncologyOncanvas.com.

###

Media: To help us ensure the confidentiality of our patients, if you wish to visit the Tri-Cities Cancer Center for the purpose of interviewing and/or covering an activity, please call ahead. A department manager or a member of the Cancer Center outreach staff will be available to assist you. We appreciate your understanding and cooperation.